

2015 NSW Clubs Census - Social Contribution of Clubs

The NSW registered Club industry makes a significant direct contribution to local communities through cash and in-kind donations to a broad range of community priorities and initiatives.



13%

Average Cash Donation in 2015 as a Share of Net Profit (Small Clubs)

The average cash donation by small Clubs earning less than \$1 million in annual gaming machine revenue was \$12,000 in 2015, or 13 per cent of average net profit.

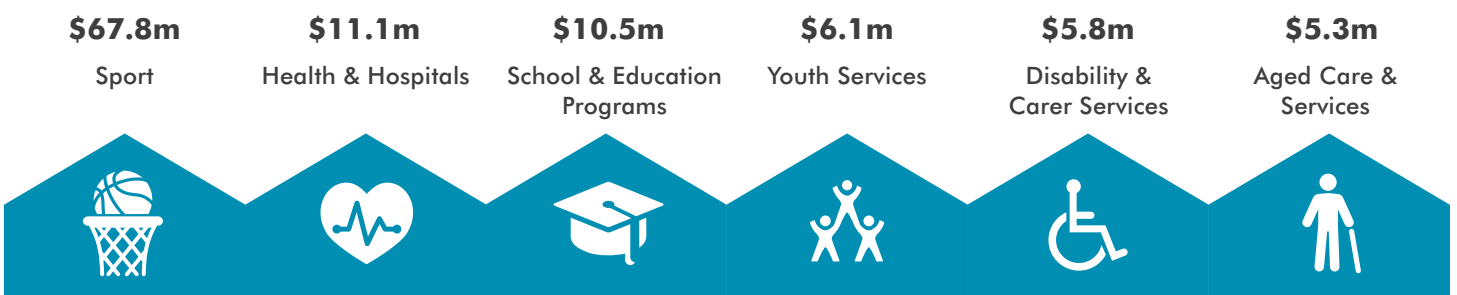
19%

Average Cash Donation in 2015 as a Share of Net Profit (Medium And Large Clubs)

The average cash donation by medium and large Clubs earning more than \$1 million in annual gaming machine revenue was \$230,000 in 2015, or 19 per cent of average net profit.

Top 6 Contribution Areas in 2015

(Cash and In-Kind Donations)



This information has been extracted from, and should be read in conjunction with, the report prepared by KPMG outlining the key findings from the 2015 National Clubs Census. A copy of this report is available at <http://www.clubsnsw.com.au/news/publications/nsw-club-census>.

© 2016 KPMG, an Australian partnership and a member firm of the KPMG network of independent member firms affiliated with KPMG International Cooperative ("KPMG International"), a Swiss entity. All rights reserved. The KPMG name and logo are registered trademarks or trademarks of KPMG International. Liability limited by a scheme approved under Professional Standards Legislation.

While all Clubs made a contribution, larger Clubs leverage their financial capacity to make higher average donations to the local community.

Facilities Provided by Clubs in 2015



Case Study

DOOLEYS Lidcombe Catholic Club

Clubs support their local communities through a range of community projects. DOOLEYS Lidcombe Catholic Club presents an example of how Clubs can support their community through the provision of support services.

Through their community engagement strategy, DOOLEYS has built strong, well established partnerships with a number of local organisations.

Through this partnership framework, DOOLEYS has developed and funded needs-based projects with organisations who specialise in refugee support services in the local area in order to meet a number of service gaps for vulnerable people in their community.

Some of the key outcomes of these projects since the partnership framework has been established are outlined to the right.

15

Workshops on employment issues for asylum seekers designed and delivered in partnership with STARTTS and Training for Change.

200

Community members supported with access to job seeker support services through the Connect to Work project in partnership with Auburn Small Community Organisation Network and MTC Australia.

66

Community members supported with access to employment skills workshops aimed at helping disadvantaged women prepare for employment.

Clubs in NSW provided a wide range of sporting and cultural facilities for access to the community. These facilities were typically accessed at subsidised or no cost.